



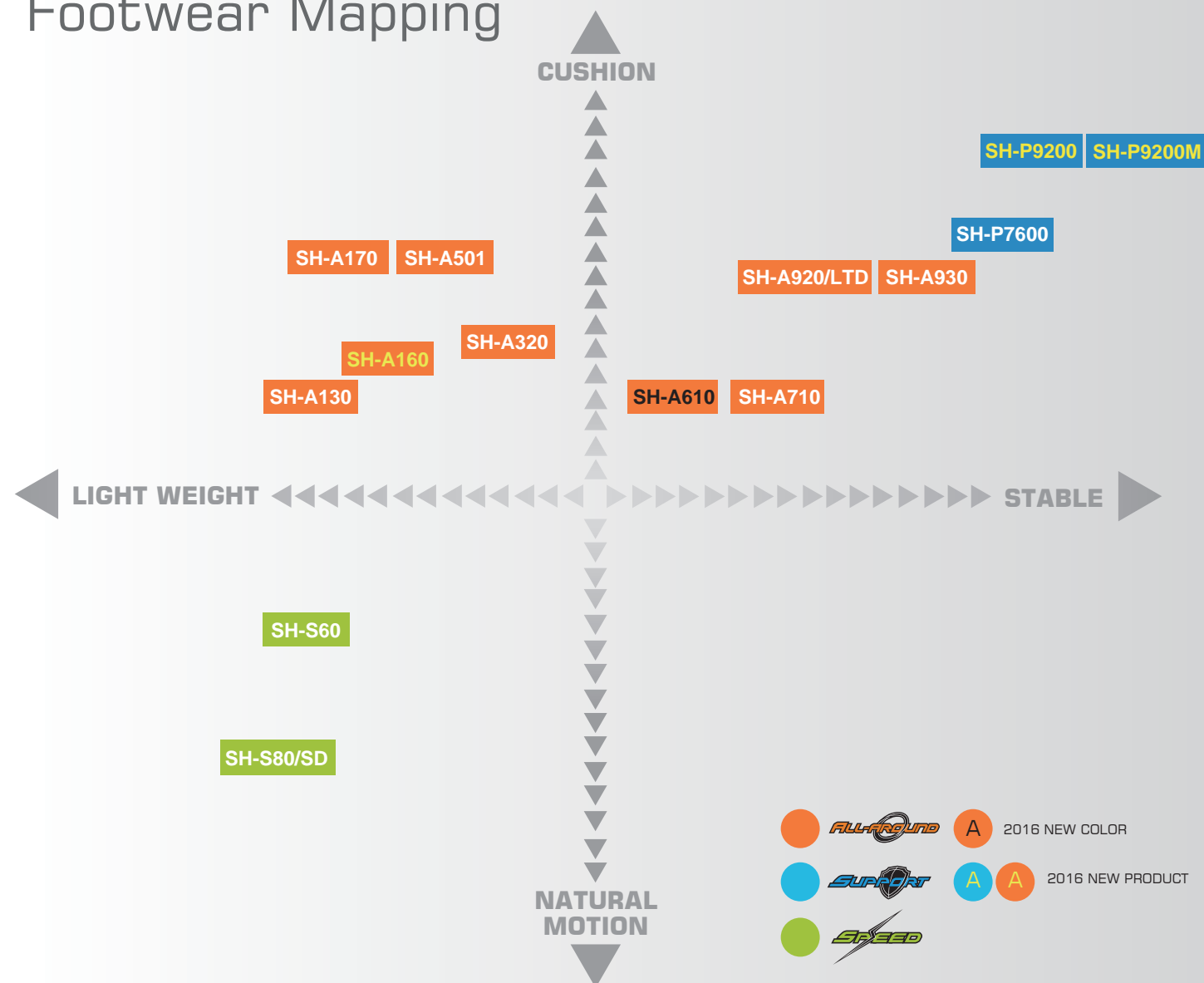
# FOOTWEAR

# VICTOR 3 TYPES OF FOOTWEAR

It is extremely important to choose a suitable pair of badminton shoes when you play. As well as avoiding sports injury, the right shoes can help you perform better. VICTOR's R&D team has divided badminton shoes into three types according to different functions, each type unique in its own way. The three types of badminton shoes are explained below :

ALL-AROUND	SUPPORT	SPEED
FIT AND COMFORT	ANTI-TORSION AND SHOCK RESISTANCE	LIGHT WEIGHT AND MOTION
<p>Badminton footwork can be characterized as "forward, back, sudden turn, sudden halt." The ALL-AROUND type of badminton footwear includes the characteristics : CUSHION, STABLE, NATURAL MOTION and LIGHT WEIGHT.</p>	<p>The footwork in badminton, is inspired by the Chinese character "米". The SUPPORT type of badminton footwear includes two characteristics: CUSHION and STABLE.</p>	<p>Badminton is a sport that requires speed and agility. The SPEED type of badminton footwear includes two characteristics: LIGHT WEIGHT and MOTION.</p>

## Footwear Mapping



# SH-P9200

# TAKE CONTROL



NEO DUPLEX

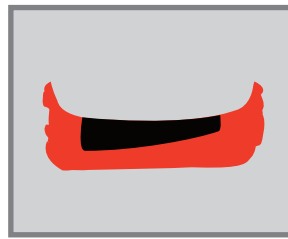
Light Resilient EVA

ENERGY MAX3.0

**VICTOR**

www.victorsport.co.id

## NEO DUPLEX



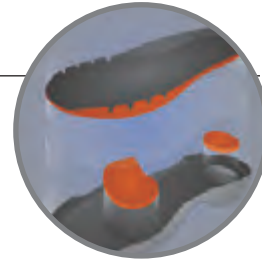
The newly invented double-wedge structure midsole takes the ENERGYMAX3.0 cushioning and lays Light Resilient EVA beneath sloping at an biomechanically computed angle of 7° to complement the foot's dynamic motion, providing exceptional support and the plush, bouncy cushioning the shuttlers need to perform quick movements.

## ENERGYMAX3.0

The new generation of highly elasticity material, with a 22% increase in rebound ability. The shock absorbency increase by 6%, which can dramatically enhance the instant resilience, shock absorption and cushioning effect to shocks.

## ENERGYMAX

The high elasticity shock absorbing material of ENERGYMAX has excellent durability, strength, and is retains it's shape well. It is used in footwear-related products to increase the overall support of the shoes. It reduces momentum loss and redirects the momentum towards the next direction.



# FOOTWEAR TECHNOLOGIES

## Shock Absorption and Bound

## Light Resilient EVA

Lightweight, highly resilient, and durable midsole, increased 16% in durability and 5% in resilient performance compared to the original high resilient EVA, reduced 19% of weight, improves the life-span of shoes, and lower the muscle burden for users in intensive exercises, allows taking agile paces quickly.



## LM LIGHTWEIGHT MIDSOLE

The ultralight material used for mid-sole is much lighter than ordinary EVA. Lightweight, strong and resistant to deformation, this material is capable of absorbing part of external impacts and providing excellent cushion.

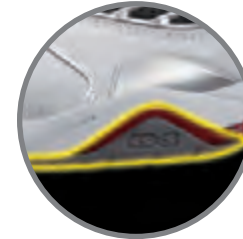


## Resilient EVA

Highly resilient midsole material is more durable and retains its shape better. It not only provides the basic stability and shock absorption but also increases flexibility and the reaction time while changing directions.



## Stable



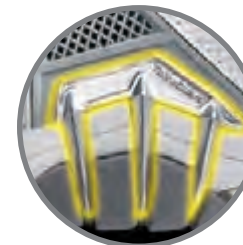
## LS-S

The outside of forefoot is designed using high-strength TPU. This significantly enhances the lateral stability during intense and rapid transfer of direction when playing badminton.



## CARBON POWER

The three-dimensional carbon fiber sheet provides mid-sole stability and decreases the torsional strain on the foot's arch.



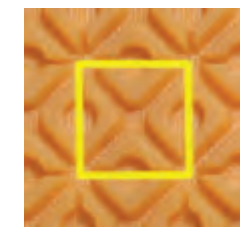
## TalonGuard

TalonGuard is a lateral stability technology which combines two levels of TPU. Like an eagle's claw, it is placed at the lateral forefoot to provide stability and also prevents pronation during lateral movement.

## Outsole

## VS R ANTI-SLIP

Upgraded outsole rubber, slip-resistant performance increases by 21% on dry PU floor.



## V-BRAKE

The V-shaped square design allows a light-weight and minimized landing area, while providing the anti-slip for vertical and lateral movement. This gives you more responsive and agile footwork while providing additional durability.



## RADIATION

Coping with the asterisk steps, the center is the rounded-shape design surrounded by triangular shapes. The radiation pattern provides more grip on the court during lateral and vertical movements. The small lump pattern distribution adds additional grip as the sensor and increases the grip.

## Durability



This is a special ultra-abrasion resistance soft rubber that provide excellent grip, slip resistance and wear resistance.



## V-Durable

The inner toe uses the special technics to provide better strength and durability.

## Embrace



## Auto fit

Through the layered design of laces and a high strength wedge shaped belt the elastic strap and laces can be adjusted simultaneously. This provides a more comprehensive fit as well and allows the shoe to more effectively protect your feet.

## BRACE TEK

BRACE TEK technology provides more comfort and safety feeling to the foot, which gives more stability throughout the entire shoe.



## Mesh

## Breathing



A unique breathing mesh layer is used to increase ventilation. It facilitates the heat dissipation. This creates a more comfortable environment for the feet.

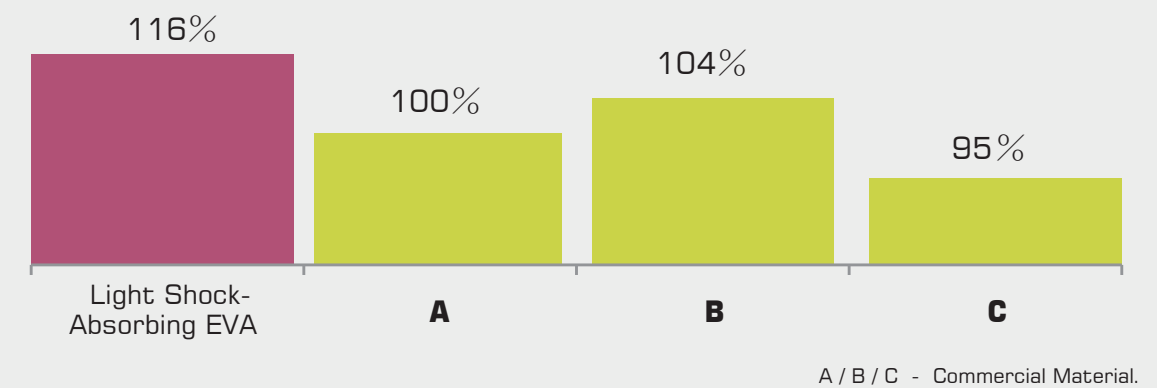
# SH-P9200

## Midsole Structure

NEO DUPLEX, the concept is inputted the midsole structure. The new concept of midsole is a separated structure which strengthen the new function from front and back. It's the brand new design in the midsole.



## Performance of Shock - Absorbing



< Data: From VICTOR R&D Lab >



- ▶ UPPER Microfiber PU Leather+V-Durable+Double Mesh
- ▶ MIDSOLE Light Shock-Absorbing EVA+Light Resilient EVA+ENERGYMAX 3.0+TPU+Carbon Power
- ▶ OUTSOLE Rubber
- ▶ LAST V-SHAPE 2.5
- ▶ SIZE DG (39-44) EF (39-46) DC (39-45,5)



DG (Wine Red/Fluorescent Green)



EF (Yellow/Blue)



DC (Red/Black)

PROFESSIONAL



www.victorsport.co.id

BUILT *SH-A920LTD* TO WIN

NEW



SH-P9200 M

GF (Fluorescent Green/ Blue) AF (White/ Blue)

- **UPPER** Microfiber PU Leather + V-Durable + Double Mesh
- **MIDSOLE** Light Shock-Absorbing EVA + Light Resilient EVA + ENERGYMAX3.0 + TPU + Carbon Power
- **OUTSOLE** Rubber
- **LAST** V-SHAPE 2.5
- **SIZE** 40-44



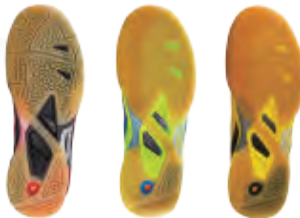
SH-P9100

D (Red/ Black) FG (Blue/ Fluorescent Green) E (Yellow/ Black)

- **UPPER** PU Leather + V-Durable + Double Mesh
- **MIDSOLE** Light Resilient EVA + ENERGYMAX3.0 + TPU + Carbon Power + Solid EVA
- **OUTSOLE** Rubber + D.MAX
- **LAST** V-SHAPE 2.5
- **SIZE** D (39-42) FG (39-43) E (39-43)

SIZE CHART

EU	35	36	37	37.5	38	39	39.5	40	40.5	41	42	43	44	44.5	45	45.5
US	4	4.5	5	5.5	6	6.5	7	7.5	8	8.5	9	9.5	10	10.5	11	11.5
US(Women's)	5.5	6	6.5	7	7.5	8	8.5	9	9.5	10	-	-	-	-	-	-
mm	220	225	230	235	240	245	250	255	260	265	270	275	280	285	290	295



NEO DUPLEX

Light Resilient EVA

ENERGYMAX3.0

PROFESSIONAL



SH-A920 LTD

FG (Blue/ Fluorescent Green) CD (Black/ Red)

- **UPPER** Microfiber PU Leather + V-Durable + Double Mesh
- **MIDSOLE** Light Resilient EVA + ENERGYMAX3.0 + TPU + Carbon Power + Solid EVA
- **OUTSOLE** Rubber
- **LAST** V-SHAPE 2.5
- **SIZE** FG (39-44) CD (41-45)



SH-A920

F (Blue/ Black) D (Red/ Black)

- **UPPER** PU Leather + V-Durable + Double Mesh
- **MIDSOLE** Light Resilient EVA + ENERGYMAX3.0 + TPU + Carbon Power + Solid EVA
- **OUTSOLE** Rubber
- **LAST** V-SHAPE 2.5
- **SIZE** F (40-44) D (39-46)

SIZE CHART

EU	35	36	37	37.5	38	39	39.5	40	40.5	41	42	43	44	44.5	45	45.5
US	4	4.5	5	5.5	6	6.5	7	7.5	8	8.5	9	9.5	10	10.5	11	11.5
US(Women's)	5.5	6	6.5	7	7.5	8	8.5	9	9.5	10	-	-	-	-	-	-
mm	220	225	230	235	240	245	250	255	260	265	270	275	280	285	290	295

PROFESSIONAL



SH-A710

D (White/ Red) F (White/ Blue) DE (Red/ Yellow)

- **UPPER** PU Leather + V-Durable + Double Mesh
- **MIDSOLE** Resilient EVA + ENERGYMAX3.0 + TPU + Carbon Power + Solid EVA
- **OUTSOLE** Rubber
- **LAST** U-SHAPE 2.5
- **SIZE** D (39-43) F (39-44) DE (39-44)



SH-A610

CE (Black/ Fluorescent Yellow) AD (White/ Red) FO (Blue/ Orange)

- **UPPER** PU Leather + Double Mesh
- **MIDSOLE** Resilient EVA + ENERGYMAX3.0 + Solid EVA + Nylon Sheet
- **OUTSOLE** Rubber
- **LAST** U-SHAPE 2.5
- **SIZE** CE (39-44) AD (39-42) FO (39-42)

## PROFESSIONAL



### SH-S80SD

F (Blue/ Black) Q (Rose Red/ Black)

- **UPPER** PU Leather + V-Durable + Double Mesh
- **MIDSOLE** Light Resilient EVA + ENERGYMAX3.0 + TPU + Carbon Power + Solid EVA
- **OUTSOLE** Rubber
- **LAST** V-SHAPE 2.0
- **SIZE** F (41) Q (40-43)



### SH-S80

O (Orange/ Blue) E (Yellow/ Blue)

- **UPPER** PU Leather + V-Durable + Double Mesh
- **MIDSOLE** Light Resilient EVA + ENERGYMAX3.0 + TPU + Carbon Power + Solid EVA
- **OUTSOLE** Rubber
- **LAST** V-SHAPE 2.0
- **SIZE** O (39) E (39-42)

SH-S80SD

# MAKE YOUR MARK



[www.victorsport.co.id](http://www.victorsport.co.id)

VS **ANTI-SLIP**

ENERGYMAX3.0

Light Resilient EVA

RUNNING

JUNIOR



NEW

SH-R700

CE (Black/ Yellow) DE (Red/ Fluorescent Yellow)

- **UPPER** Kintted Mesh Fabric
- **MIDSOLE** EVA + TPU
- **OUTSOLE** Rubber
- **SIZE** 40-44
- **REMARK** Running



NEW

SH-9200JR

DG (Wine Red/ Fluorescent Green) EF (Yellow/ Blue)

- **UPPER** PU Leather + Mesh
- **MIDSOLE** Resilient EVA + ENERGYMAX + Nylon Sheet
- **OUTSOLE** Rubber
- **SIZE** 33-36
- **REMARK** Junior

SANDALS

Special Products for  
ASEAN



SH-002S

F (Blue/ Orange)

- **MATERIAL** EVA
- **SIZE** M (240mm-255mm)  
L (260mm-275mm)  
XL (280mm-295mm)
- **REMARK** Sandals



NEW

AS-@31

FG (Blue/ Green)

- **UPPER** PU Leather + Mesh
- **MIDSOLE** EVA + ENERGYMAX + Nylon Sheet
- **OUTSOLE** Rubber
- **SIZE** 35-45



SH-80JR

E (Yellow/ Blue)

- **UPPER** PU Leather + Mesh
- **MIDSOLE** Resilient EVA + ENERGYMAX + Nylon Sheet
- **OUTSOLE** Rubber
- **SIZE** 33-37
- **REMARK** Junior

SIZE CHART

EU	35	36	37	37.5	38	39	39.5	40	40.5	41	42	43	44	44.5	45	45.5
US	4	4.5	5	5.5	6	6.5	7	7.5	8	8.5	9	9.5	10	10.5	11	11.5
US(Women's)	5.5	6	6.5	7	7.5	8	8.5	9	9.5	10	-	-	-	-	-	-
mm	220	225	230	235	240	245	250	255	260	265	270	275	280	285	290	295

# SHOES ACCESORIES

## VICTOR HIGHLY RESILIENT SPORT INSOLES

### NORMAL ARCH



**VT-XD8**  
High Elasticity Sports Insole

► **MATERIAL** EVA

### HIGH ARCH



**VT-XD8H**  
High Elasticity High Arch Sports Insole

► **MATERIAL** ENERGYMAX + PORON

### FLAT ARCH



**VT-XD8F**  
High Elasticity Flat Arch Sports Insole

► **MATERIAL** ENERGYMAX + SOLID EVA

#### 1. Rippled Anti-Slip Structure

Forefoot position designed with rippled anti-slip structure based on the curvature of the foot with the proper spacing slip to make the best grip during extreme movements.

#### 2. Moisture-Wicking Air Holes

Discharge moisture rapidly to keep feet dry and comfortable.

#### 3. Fine Rhomboidal Anti-Slip Pattern

Improve friction, enhancing the ability to engage insoles and socks.

#### 4. Ergonomic Design

Scientific computing and ergonomic design allows foot arch and heel fits the insole much better. Strengthening protection and support for intense movements.

#### 5. ENERGYMAX3.0

Full length design with latest ENERGYMAX3.0 high elastic materials, reflect high comfort foot feeling.

#### 6. Anti-Slip Arcs

Curved thin wavy stripe design anti-slip arcs on insole back, enhances both its flexibility and the anti-slip effect, make forefoot to bend easily and enhance instant start-up performance.

#### 7. Highly Intensified EVA & High Elastic Cushion

Combined Highly Intensified EVA and High Elastic Cushion material for normal arch, highly intensified EVA provides well support for arch, enhancing stability during movement, reducing pressure and fatigue for arch; high elastic cushion with PORON material provides high durability and performance of cushion.

#### 8. High Elastic Cushion

Forefoot and heel position insert with high elastic cushion material- PORON, which has high buffer, high elastic, durable and not easily deformed features, to reduce the plantar pressure during exercise.

#### 9. Highly Intensified EVA

Flat arch are likely to leading to the occurrence of valgus during exercise, the Highly Intensified EVA are utilized on the position of arch to heel, to support the medial foot and reduce foot injuries.

#### Size Range

S (235 - 245 mm) M (250 - 260 mm) L (265 - 275 mm)  
XL (280 - 290 mm) XXL (295 - 305 mm)



**VT-XD7**  
Light Weight Elasticity Insole

► **MATERIAL** EVA

► **SIZE** M (250 - 260 mm)  
L (265 - 275 mm)



SPORT SOCKS



SK133 C/H/D **NEW**

Sport Socks for Men

- **COLOR** Black/ Dark Grey/ Red
- **SIZE** 25-28cm
- **MATERIAL** 50% Combed Cotton + 28% Nylon + 10% Polyester + 10% Elastodiene + 2% Spandex



SK134 CO/AF/AD **NEW**

Sport Socks for Men

- **COLOR** Black + Orange/ White + Royal Blue/ White + Red
- **SIZE** 25-28cm
- **MATERIAL** 81.4% Combed Cotton + 16.8% Polyester + 1.8% Spandex



SK128 C/F

Sport Socks for Men

- **COLOR** Black/ Blue
- **SIZE** 25-28cm
- **MATERIAL** 76% Combed Cotton + 19% Polyester + 5% Spandex



SK112 D/F/K

Sport Socks for Men

- **COLOR** Red/ Blue/ Dark Grey
- **SIZE** 25-28cm
- **MATERIAL** 53% Cotton Combined + 23% Coolmax Yarn + 19% Polyester + 3% Rubber + 2% Spandex



SK135 AC/AD/BO **NEW**

Sport Socks for Men

- **COLOR** White + Black/ White + Red/ Navy + Orange
- **SIZE** 25-28cm
- **MATERIAL** 81.7% Combed Cotton + 16.6% Polyester + 1.7% Spandex



SK144 C

Sport Socks for Men

- **COLOR** Black
- **SIZE** 25-28cm
- **MATERIAL** 64.6% Cotton + 8.5% Nylon + 16.1% Polyester + 9.5% Rubber + 1.3% Spandex



SK132 O/F/H

Sport Socks for Men

- **COLOR** Orange/ Blue/ Light Grey
- **SIZE** 25-28cm
- **MATERIAL** 94.1% Combed Cotton + 5.1% Nylon + 0.8% Spandex



SK129 P/E/J/O

Sport Socks for Men

- **COLOR** Apple Green/ Yellow/ Purple/ Orange
- **SIZE** 25-28cm
- **MATERIAL** 76% Cotton Combined + 19% Polyester + 5% Spandex



SK125 C/K

Sport Socks for Men

- **COLOR** Black/ Dark Grey
- **SIZE** 25-28cm
- **MATERIAL** 53% Cotton Combined + 16% Absorbing Yarn + 14% Polyester + 4.5% Spandex + 4.5% Coolmax Yarn + 2.5% Nylon + 5.5% Bamboo Charcoal Fiber



SK127 D/F

Sport Socks for Men

- **COLOR** Red/ Blue
- **SIZE** 25-28cm
- **MATERIAL** 79% Cotton Combined + 17% Polyester + 4% Spandex



SK190 A/C

Sport Socks for Men

- **COLOR** White/ Black
- **SIZE** 25-28cm
- **MATERIAL** 57% Cotton Combined + 25% Absorbing Yarn + 15% Nylon + 3% Spandex



SK233 H/F/G **NEW**

Sport Socks for Women

- **COLOR** Dark Grey/ Blue/ Green
- **SIZE** 22-25cm
- **MATERIAL** 50% Combed Cotton + 28% Nylon + 10% Polyester + 10% Elastodiene + 2% Spandex

SPORT SOCKS



SK234 AG/AF/AI **NEW**

Sport Socks for Women

- **COLOR** White + Green/ White + Royal Blue/ White + Pink
- **SIZE** 22-25cm
- **MATERIAL** 81.4% Combed Cotton + 16.8% Polyester + 1.8% Spandex



SK235 AC/AM/AI **NEW**

Sport Socks for Women

- **COLOR** White +Black/ White + Light Blue/ White + Pink
- **SIZE** 22-25cm
- **MATERIAL** 81.7% Combed Cotton + 16.6% Polyester + 1.7% Spandex



SK232 Q/E/M

Sport Socks for Women

- **COLOR** Rose Red/ Yellow/ Light Blue
- **SIZE** 22-25cm
- **MATERIAL** 94.1% Combed Cotton + 5.1% Nylon + 0.8% Spandex



SK220 D/F

Sport Socks for Women

- **COLOR** Red/ Blue
- **SIZE** 22-25cm
- **MATERIAL** 53% 32S Fine Cotton + 23% Acrylic + 19% Polyester + Yarn + 3% Elastane + 2% Spandex



SK225 I/D

Sport Socks for Women

- **COLOR** Pink/ Red
- **SIZE** 22-25cm
- **MATERIAL** 53% Cotton Combined + 16% Absorbing Yarn + 14% Polyester + 4.5% Spandex +4.5% Coolmax Yarn + 2.5% Nylon + 5.5% Bamboo Charcoal Fiber



SK227 J/Q/C

Sport Socks for Women

- **COLOR** Purple/ Rose Red/ Black
- **SIZE** 22-25cm
- **MATERIAL** 76% Cotton Combined + 19% Polyster + 5% Spandex



SK221 C/E/G/M/Q

Sport Socks for Women

- **COLOR** Black/ Yellow/ Green/ Blue/ Rose Red
- **SIZE** 22-25cm
- **MATERIAL** 76% 32S Combed Cotton + 19% Polyester + 3% Rubber + 2% Spandex



SK223 F/I

Sport Socks for Women

- **COLOR** Blue/ Pink
- **SIZE** 22-25cm
- **MATERIAL** 76% 32S Combed Cotton + 19% Polyester + 3% Rubber + 2% Spandex



SK228 I/R/Q

Sport Socks for Women

- **COLOR** Pink/ Pastel Green/ Rose Red
- **SIZE** 22-25cm
- **MATERIAL** 79% Cotton Combined + 17% Polyester + 4% Spandex



SK229 M/J

Sport Socks for Women

- **COLOR** Light Blue/ Purple
- **SIZE** 22-25cm
- **MATERIAL** 76% Cotton Combined + 19% Polyester + 5% Spandex



SK290 A/C

Sport Socks for Women

- **COLOR** White/ Black
- **SIZE** 22-25cm
- **MATERIAL** 57% Cotton Combined + 25% Absorbing Yarn + 15% Nylon + 3% Spandex



SK215 C/D/I/J/R

Sport Socks for Women

- **COLOR** Black/ Red/ Pink/ Purple/ Pastel Green
- **SIZE** 22-25cm
- **MATERIAL** 53% Cotton + 19% Polyester + 23% Absorbing Yarn + 3% Rubber + 2% Spandex



SK230 Q/O/J

Sport Socks for Women

- **COLOR** Rose Red/ Orange/ Purple
- **SIZE** 22-25cm
- **MATERIAL** 94.1% Combed Cotton + 5.1% Nylon + 0.8 Spandex



SK231 M/Q

Sport Socks for Women

- **COLOR** Light Blue/ Rose Red
- **SIZE** 22-25cm
- **MATERIAL** 64.6% Combed Cotton + 8.5% Nylon + 25.6% Rubber + 1.3% Spandex



SK020 Q

Sport Socks for Junior

- **COLOR** Rose Red
- **SIZE** 16-19cm
- **MATERIAL** 76% Cotton Combined + 19% Polyster + 3% Rubber + 2% Spandex



SK021 E/Q

Sport Socks for Junior

- **COLOR** Yellow/ Rose Red
- **SIZE** 19-22cm
- **MATERIAL** 76% Cotton Combined + 19% Polyster + 3% Rubber + 2% Spandex